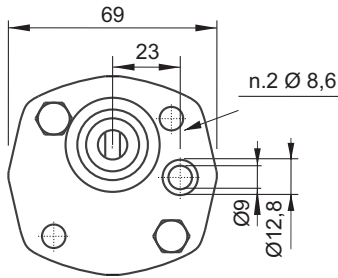
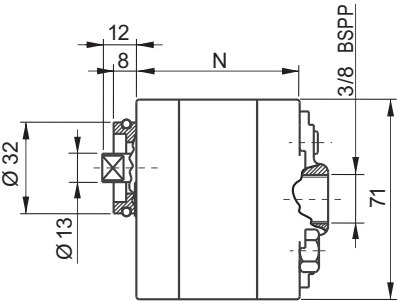
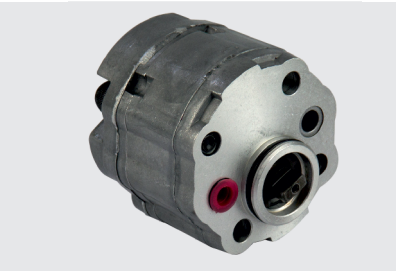


H SERIES HIGH PRESSURE GEAR PUMPS, GROUP 1

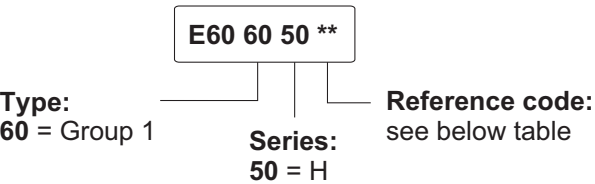


Main features

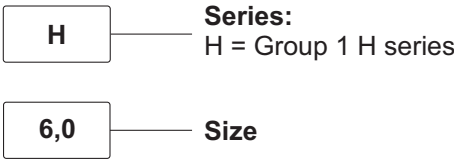
Oil temperature	-15 ÷ +80 °C
Inlet pressure	0,7 < P < 3,0 bar (absolute pressure)
Fixing bolts	2 x M8 12.9 class steel tightening torque: 30 Nm
Pressure definition	Peak pressure: cycle 2 s ON Intermittent pressure: cycle 20 s ON Continuous pressure: cycle always ON

Standard rotation direction: clockwise (from shaft side).  
Counterclockwise rotation pumps can be mounted on request.  
Ask our sales department.

Spare part code



Assembly code



Available range

Nominal size	Displacement [cc/rev]	Peak pressure [bar]	Intermittent pressure [bar]	Continuous pressure [bar]	Min speed [rpm]	Max speed [rpm]	N [mm]	Bolts* [mm]	Spare part code	Weight [Kg]
H1,2	1,2	290	270	250	1000	6000	39,8	M8x55	E60605002	0,50
H1,7	1,7	280	270	250	1000	6000	41,5	M8x60	E60605035	0,52
H2,2	2,2	290	270	250	800	5500	44,4	M8x60	E60605004	0,54
H2,6	2,6	290	270	250	800	5500	45,8	M8x60	E60605005	0,56
H3,2	3,2	320	270	250	600	5000	52,2	M8x70	E60605006	0,58
H3,8	3,8	320	270	250	600	5000	54,2	M8x70	E60605007	0,61
H4,2	4,2	320	270	250	600	4500	54,7	M8x70	E60605008	1,05
H4,7	5,0	280	270	250	600	3200	84,0	M8x100	E60605009	1,12
H6,0	6,0	230	270	250	600	3000	87,3	M8x105	E60605010	1,22
H7,4	7,4	230	210	190	600	2500	97,4	M8x115	E60605012	1,80

\* One or more washers are always fitted to secure the bolt engagement