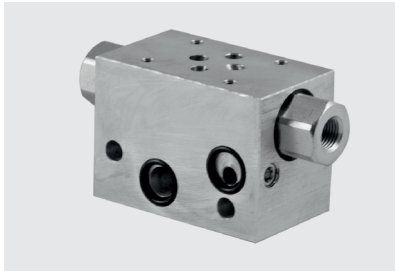


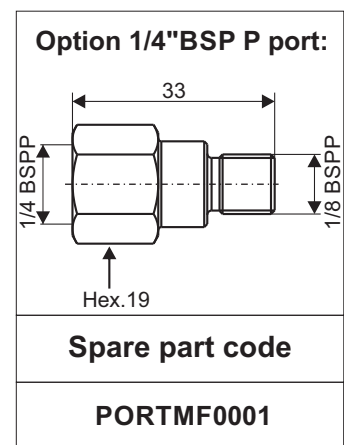
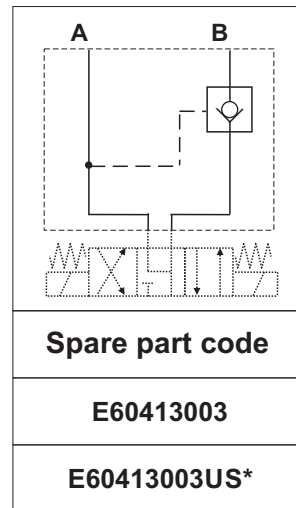
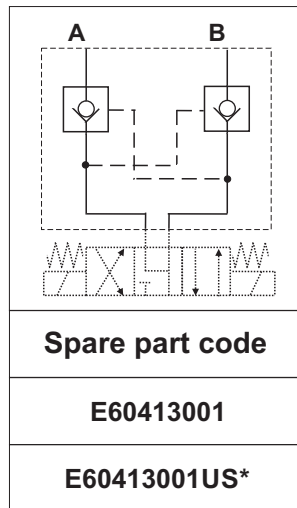
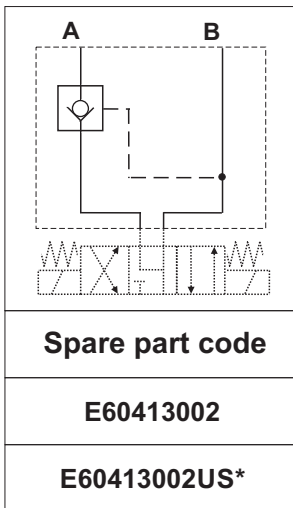
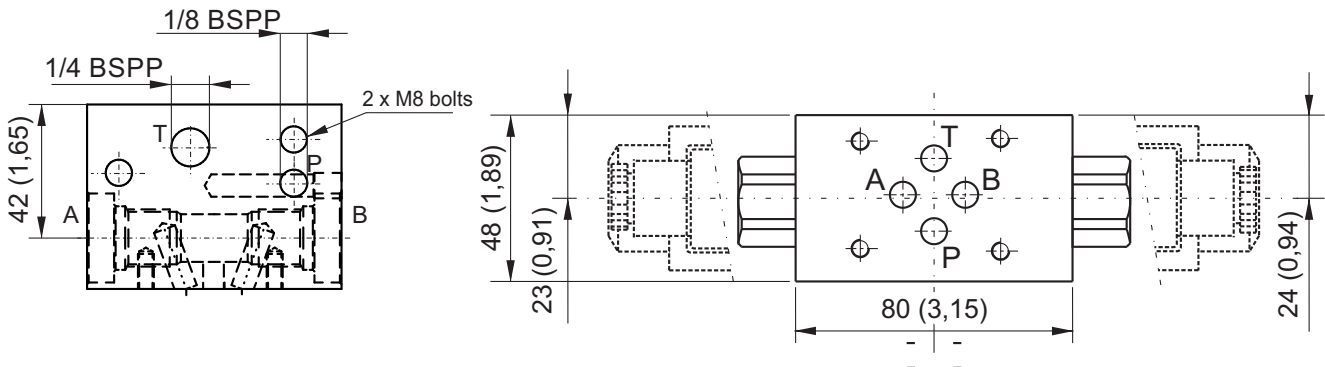
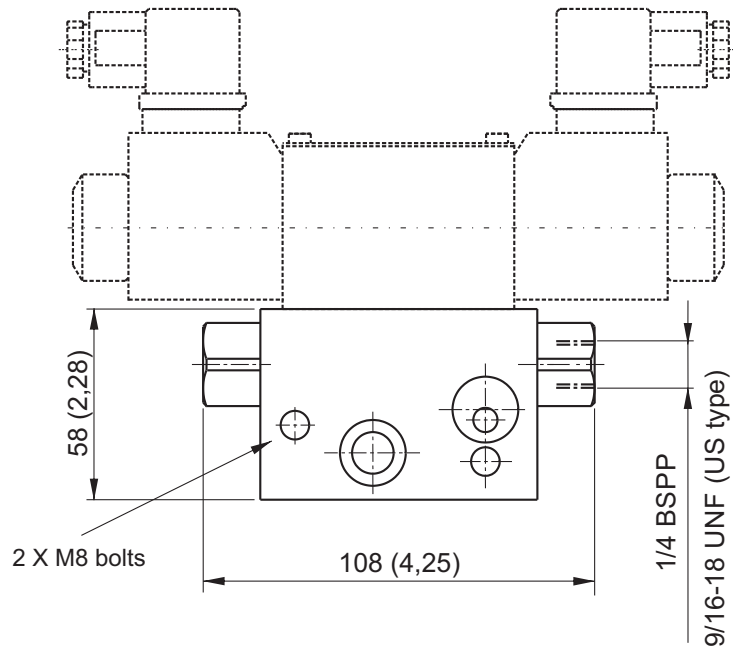
MODULAR MANIFOLDS NG6 (CETOP 3) WITH INTEGRAL PILOT OPERATED CHECK VALVES



Dimensions in mm (inches)

Main features

Max pressure	350 bar
Pilot ratio	1:5,6
Weight	0,71 Kg (1,56lb)
Fixing bolts	2 M8 tie - rods steel class 8.8 or above



Note: Recommended tightening torque for M8 bolts: 16 Nm. Attention! Do not use tie-rods less than 8.8.

*: US execution with 9/16-18UNF SAE06 exit ports

To add external manifolds to a PPC assembly code, just add their spare part codes at the end of the PPC code. eg: PPC-0,8 12DC-MB-J-K0,6-V200-G-RETURN KIT-1,5L+E60403004+E60413001.

Code does not include the Cetop solenoid valve. See NG6 (Cetop 3) valves table in section G.